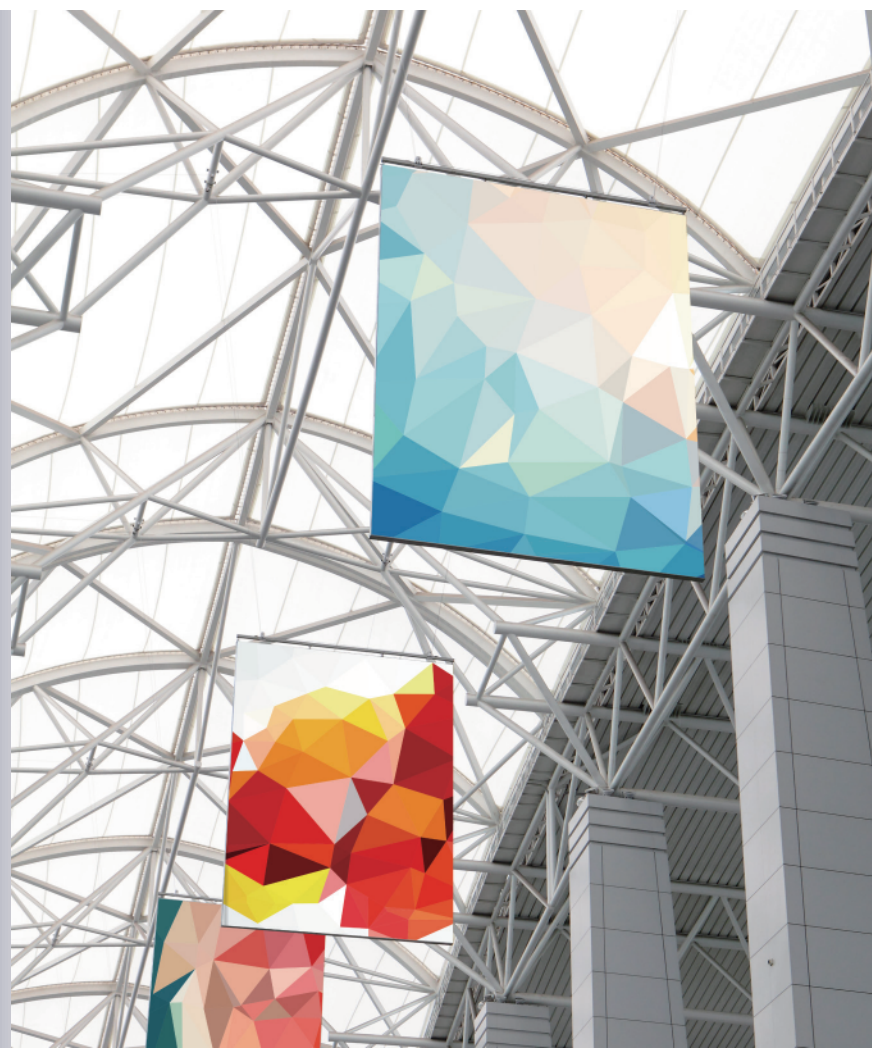


Total support system that drastically improves productivity



Solutions that ensure long and stable printing operation



High-quality printing made possible by advanced inkjet technologies



Newly-developed RIP software with the combination of usability and high performance of standard accessory

Raster Link 6 PLUS

Intuitive and user-friendly



Necessary information is integrated on one screen: Printer status, rip process, job status etc. at a glance. Operation involving multiple jobs such as the imposition of images and the composition of jobs is clearly displayed on the screen.



Simply select the icon displaying the job you want to do. Just click the icon to quickly navigate to the desired screen. Once registering frequent-use settings to the [Favorite], you will have an easy setting for the next with just calling it from the [Favorite].

Web update function is supported

Program update and profile download can be easily performed via internet.

Specifications

Item	UJV55-320	
Printhead	On-demand piezo head (4 staggered printheads)	
Print resolution	300 dpi, 600 dpi, 900 dpi, 1,200 dpi	
Head gap	Manual adjustment: 1.7 mm / 1.9 mm / 2.6 mm / 3.3 mm (Distance between the platen and the printhead)	
Ink	Type	LED-UV ink LUS-120
	Color	4-color ink setting (C, M, Y, K) 7-color ink setting (C, M, Y, K, Lc, Lm, W) *
	Packaging	1 liter ink bottle (Ink can be filled up to 3 liters per ink container of the printer.)
Maximum print width	3,200 mm / 126 in (2,700 mm / 106.3 in when printing with 1,200 x 1,200 dpi mode)	
Maximum media width	3,250 mm / 128 in With a roll holder unit 1,620 mm / 63.8 in x 1 1,524 mm / 60 in x 2 (Twin roll printing)	
Minimum media width	210 mm / 8.3 in (Twin rolls printing with a small drive shaft: 210 mm / 8.3 in x 2)	
Media thickness	1.0 mm or less	
Roll outer diameter	Large drive shafts: Ø250 mm / 9.8 in or less Roll holders: Ø180 mm / 7 in or less	
Roll weight	Large drive shafts: 100 kg / 220.5 lb or less Roll holders: 18 kg / 39.7 lb or less	
Dimensions (W x D x H)	5,410mm x 995mm x 1,440mm / 213 in x 39.2 in x 56.7 in (Dimensions of the ink supply unit are not included) 5,680mm x 1,220mm x 1,440mm / 223.6 in x 48 in x 56.7 in (Dimensions of the ink supply unit are included)	
Weight	910 kg / 2006 lb (Weight of an ink supply unit is included)	
Power supply	AC 200-240 ± 10%, 50/60 Hz ± 1 Hz, 18 A or less	
Power consumption	4.3 kW or less	
Operational environment	Temperature	20-30°C (68-86°F)
	Humidity	35-65%Rh (No condensing)
Interface	Ethernet 1000BASE-T / USB2.0)	

Supplies

Item	Color	Item No.	Remarks
UV-curable ink LUS-120	Cyan	I-LUS12-C-BA	1L ink bottle "GREENGUARD Gold" Certification Ink
	Magenta	I-LUS12-M-BA	
	Yellow	I-LUS12-Y-BA	
	Black	I-LUS12-K-BA	
	Light Cyan	I-LUS12-LC-BA	
	Light Magenta	I-LUS12-LM-BA	
	White	I-LUS12-W-BA	

Options

Item	Item No.	Remarks
Soft media feeding kit	OPT-J0400	
UJV55 ionizer unit	OPT-J0408	
3.2m roll shaft unit	OPT-J0410	

●Some examples shown in this catalog are artificial renderings. ●Specifications, designs and dimensions shown in this catalog may be subject to change without notice for technical improvements. ●The corporate and merchandise names in this catalog are the trademarks or registered trademarks of the respective corporations. ●Inkjet printers use extremely fine dots, so colors may vary slightly after replacement of print heads. ●Also note that when using multiple printer units, colors could vary slightly from one unit to another due to slight individual differences. ●Please note that descriptions and data in this catalog are as of July 2022.

Mimaki
mimakiusa.com

MIMAKI USA, INC.
150 Satellite Blvd NE, Ste. A, Suwanee, GA 30024
Tel. 888-636-0491

Los Angeles, California
888-530-3987
Milwaukee, Wisconsin
414-367-2661

Rockaway, New Jersey
855-897-2254
Irving, Texas
888-530-3987

Toronto, Canada
905-738-3913
Mexico, South America,
Central America & Caribbean
888-636-0491

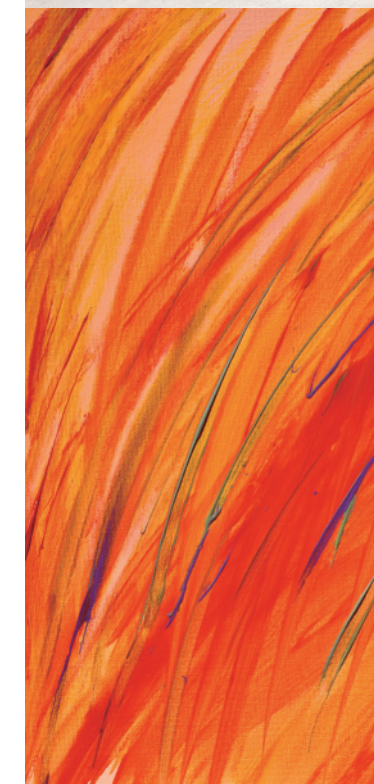
For
SIGN
GRAPHICS

3.2 m Grand Format
LED-UV Inkjet Printer

UJV55-320

Mimaki

3.2-M WIDE UV INKJET PRINTER
WILL VASTLY EXPAND YOUR BUSINESS OPPORTUNITIES



Mimaki
Green Technology



3.2-M WIDE UV INKJET PRINTER

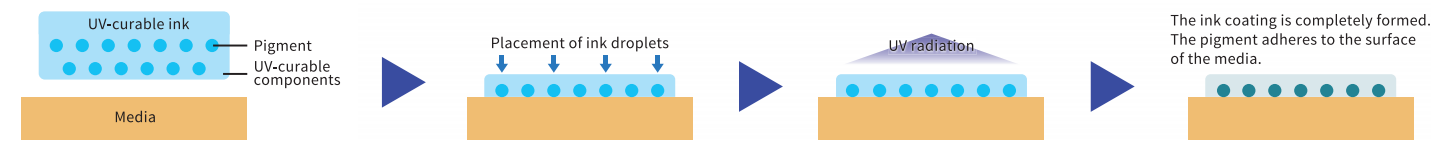
WILL VASTLY EXPAND YOUR BUSINESS OPPORTUNITIES



Productivity

UV- curable ink dries instantaneously, drastically shortening printing time

UV-curable inks are instantaneously cured by UV irradiation; thus, no drying time is needed. Print media is ready for the next production step immediately after printing. The UV-curable ink shortens production time and enables short delivery times to be met.



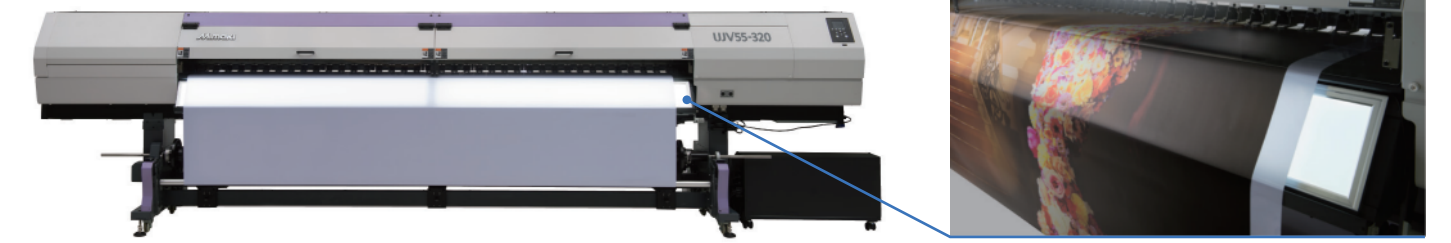
Twin-roll printing doubles productivity, shortens delivery times

Taking full advantage of the 3,200-mm printing width, two media rolls can be mounted for simultaneous printing. Different print jobs (or the same print job) can be printed on two separate rolls. The user can select the preferred width separately for each roll. The UJV55-320 shortens delivery time and reduces the workload.



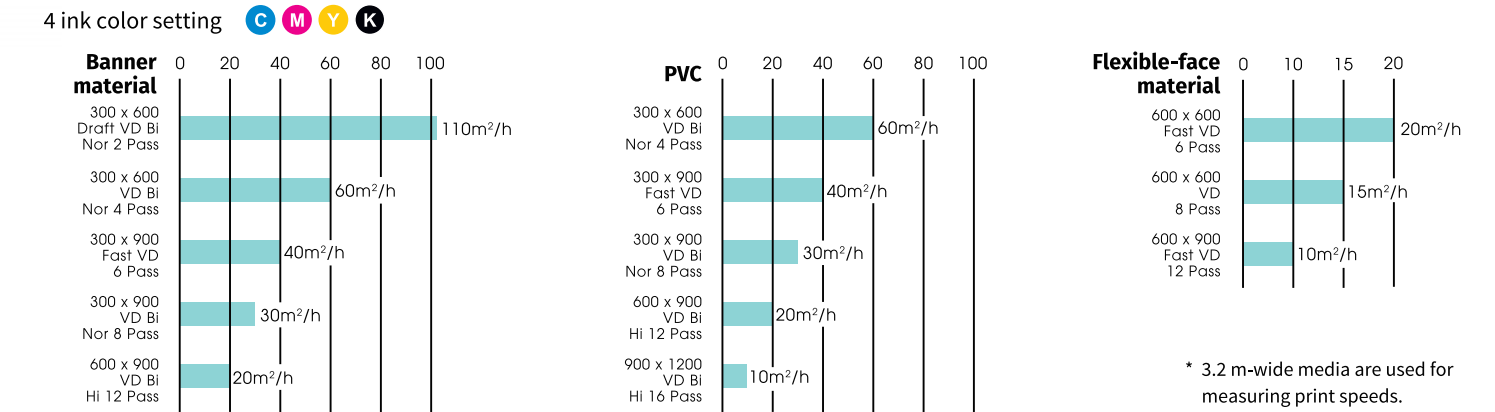
Built-in LED light for checking print quality prevents errors and saves time

The built-in LED light is extremely useful for checking the print appearance on backlit signage before taking up the print. This capability minimizes waste media because the operator can stop printing immediately when misprints or other problems are found. Furthermore, productivity is also increased by printing and performing a print quality check simultaneously.



High-speed printing

The UJV55-320 achieves a printing speed of 60 m²/h in high-speed mode on banner material. In order to deliver excellent print results and productivity, we provide optimal profiles that meet various media types and print resolutions.



White ink

White ink delivers added-value to the print

White ink enhances the overall quality of graphic design

On transparent media, a white base layer print enhances the color vibrancy of an upper color layer. In addition, when an image file is printed only in white, the appearance of the printing is very stylish. This printing method broadens the application of white ink printing.

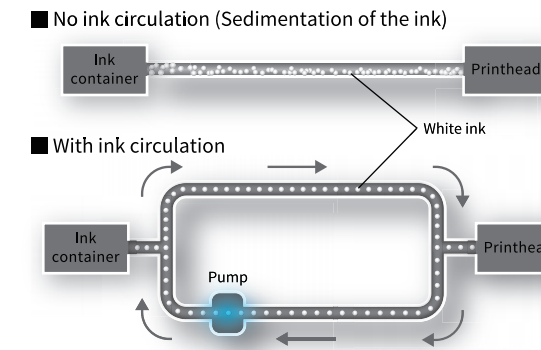


Stable operation

Eco-friendly Mimaki Circulation Technology means stable printing and reduced waste

Mimaki Circulation Technology (MCT), a standard feature, effectively avoids the settling of pigments in the ink line by regularly circulating the white ink. This prevents print troubles and enables stable printing from the start of operation. In addition, MCT contributes to the reduction of ink waste, thereby supporting environmentally and economically friendly print operation.

* MCT is effective only for the white ink.

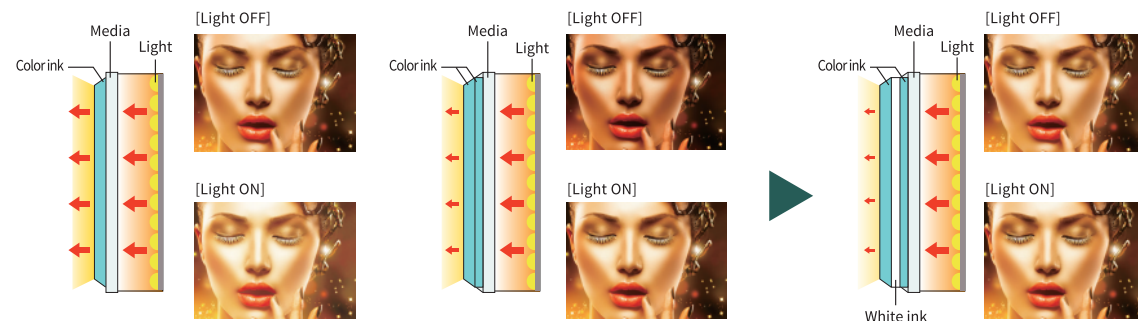


Beautiful backlit signage whether day or night

The UJV55-320 provides beautiful backlit signage at all times of the day and night. The printed color of backlit signage may look different when illuminated because the degree of light transmittance is changed. UV-curable color and white inks form a thick film on the media and deliver high opacity. The UV-curable ink printing maintains the same color appearance for the backlit signage whether the lights are on or not.

Front and Cross-section Views of Backlit Signage

■ Single-layer printing with other ink types ■ Double-layer printing with UV curable ink ■ Triple-layer printing with UJV55-320



Single-layer printing looks faded when the illumination is on because too much light is transmitted.

Double-layer printing looks dark when the illumination is off because both the layers are color prints.

Beautiful, bright print colors are maintained whether the illumination is on or off.

Imaging technique

Upgraded Mimaki Advanced Pass System eliminates visible banding

Mimaki's unique Mimaki Advanced Pass System (MAPS) 3 anti-banding system has been improved to MAPS4. Unwanted visible banding on the swath boundaries is reduced by overprinting between swaths with a reduced number of ink droplets.

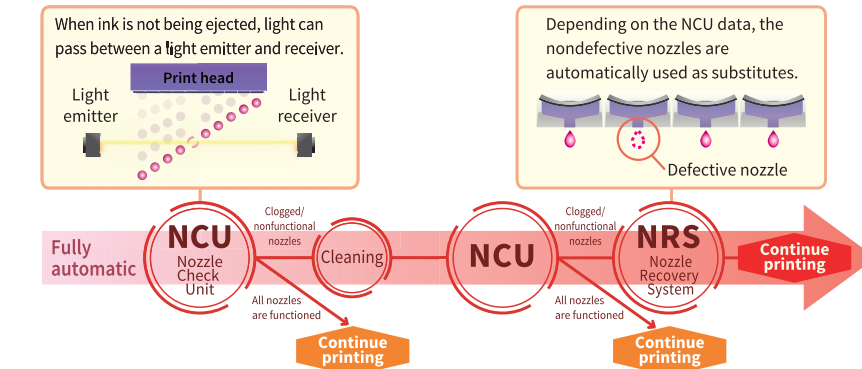


Variable dot printing delivers even smooth gradation

The variable-dot print function reduces the granular appearance and delivers smooth and beautiful gradation printing by using three different droplet sizes as best suited for each printing mode.

Innovative functions support continuous print operation

The Nozzle Check Unit (NCU) detects nonfunctioning nozzles and automatically cleans them. If the nozzles fail to operate after cleaning, defective nozzles are replaced by non-defective ones until a technician arrives, and printing is continued. This feature enables uninterrupted print operations and continuous productivity.



Mimaki Fine Diffusion 1 reduces tone jumps and uneven color printing

Mimaki Fine Diffusion 1 (MFD1) has been added to the bundled RL6 Plus RIP software. MFD1 reduces the noise that is generated in image data during image processing and enables the production of better print results without tone jumps or uneven colors.



Superior inkjet technology for clearer, sharper printing

Mimaki's superior inkjet technology accurately places ink droplets without losing their perfect circularity. This ensures that texts, lines, and edges are clearly and sharply printed.

