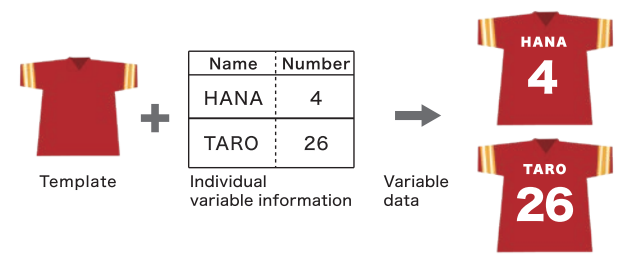


Selectable software! You can choose either RasterLink7 or TxLink5 Lite to best suit your needs.

Raster Link 7

Ease of use combined with advanced functionality

Prints out the variable data by variable print function



And more!

- Improves reproducibility of special effects (such as transparency) of PDF data
- Frequently used settings are integrated into one screen, improving the ease of use.

* RasterLink7 supports using Violet, Orange and Flourescent color ink as spot color
For using special colors as process color, please select TxLink5

TxLink 5 Lite

Equipped with multiple convenient functions for textile production

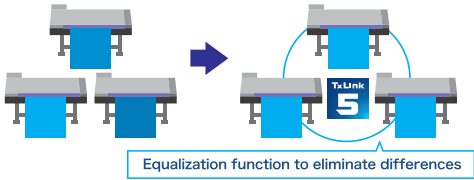
Color Replacement, Step & Repeat, Variable Print and Image Mask—provide full support for efficient uniform production.

Improved productivity and convenience in environments with multiple connected printers

Efficient job allocation (Printer Pool) and equalized print density (Colour Equalizer) for environments with multiple connected printers, and exclusive license sharing (Floating Licensing).

Color Equalizer : Ensures consistent print density

It adjusts the density across multiple printers to match the minimum density.



Enhanced production history function

Integrated cost coefficient management: Cost Manager

Cost Manager : Integrated management of cost coefficients for Ink, media, and printer

You can choose either /h or /m as the unit for printer cost



Specifications

Item		TS200-1600
Print head		On-demand piezo head
Print resolution		Y:300, 600, 900dpi X:600dpi
Maximum printable width		1,610 mm (63 in)
Media	Maximum width	1,620 mm (64 in)
	Thickness	1 mm or lower
	Roll diameter	φ180 mm or less *1
	Roll weight	25 kg (55 lb) or less *2
	Coer dia	2 inch or 3inch
Ink set		4color: BL, M, Y, K 8color: BL, M, Y, K, Vi, Or, FP, FY
Ink	Type	Sb411
	Capacity	2L ink pack
Interface		Ethernet 1000 BASE-T / (USB2.0 High-speed)
Power		Single phase AC100-120V/200-240V±10% 50/60Hz±1Hz
Power consumption		Max. 250 W or less
Operational Environment		Temperature : 20℃~30℃ Humidity35~65%Rh (Non condensing)
Dimensions (W×D×H)		2,770×748×1,623 mm (109.1×29.4×63.9 in)
Weight		155 kg (341.7 lb)

*1 :Maximum media take-up diameter, including slack from winding tension after printing.
*2 :With the OPT-J0502 Level Foot attached, supports media up to 45kg(99.2lb).

Supplies

Item	Item code	Remark
Dye sublimation (transfer) ink Sb411 ECO PASSPORT certified ink	Blue	SB411-BLT-2L
	Magenta	SB411-MT-2L
	Yellow	SB411-YT-2L
	Black	SB411-KT-2L
	Violet	SB411-VT-2L
	Orange	SB411-ORT-2L
	Fluorescent Pink	SB411-FPT-2L
	Fluorescent Yellow	SB411-FYT-2L
Flushing liquid 03	ML003-Z-K1	220 ml bottle

Some examples shown in this catalog are artificial renderings. Specifications, designs and dimensions shown in this catalog may be subject to change without notice for technical improvements. The corporate and merchandise names in this catalog are the trademarks or registered trademarks of the respective corporations. Inkjet printers use extremely fine dots, so colors may vary slightly after replacement of print heads. Also note that when using multiple printer units, colors could vary slightly from one unit to another due to slight individual differences. Please note that descriptions and data in this catalog are as of October 2025.

Mimaki®
mimakiusa.com

MIMAKI USA, INC.
4851 Thurmon Tanner Parkway, Ste. 100, Flowery Branch, GA 30542
Tel. 888-530-3988



DB30361-00

Mimaki

Inkjet Printer for Sublimation Transfer

TS200-1600

Designed for Simplicity.
Built for Creativity.

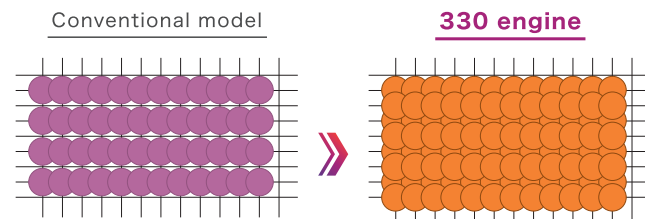




Features the flagship printer's '330 Engine' as a single unit Achieve Beautiful Solid Colors and Precise Design

Achieves outstanding quality with a high-resolution, high-definition print head

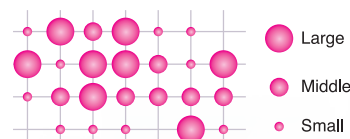
The minimum 4pl dot ejection allows for finely detailed expressions.



Increased dots per scan enable high image quality with fewer passes

Variable dot control

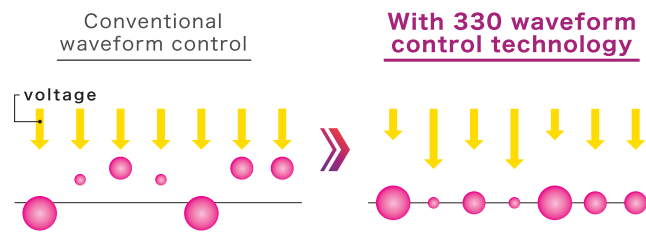
Various ink droplet sizes (large, medium, and small) are precisely placed.



Controls different dot sizes

Waveform control technology

Droplets with high circularity can be ejected to make them accurately land on the media.

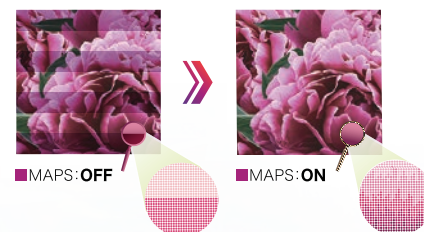


Finish with minimal graininess

MAPS

Prints path borders in a gradient tone to reduce banding and unevenness of colors.

MAPS function image



Now available with 8-color ink set Produces even More Beautiful and Vivid Colors

① Violet and Orange Inks Added to its lineup

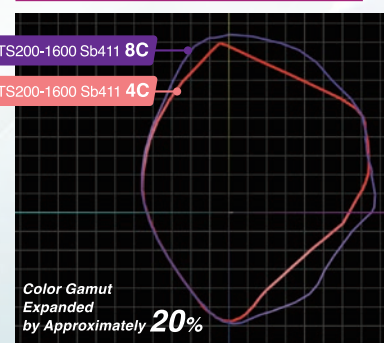
Reproduces rich blue-purple and vivid, well-defined orange tones. Enhances apparel and uniform designs for greater clarity.



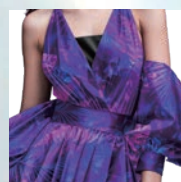
② Enhanced concentration - Fluorescent pink and yellow

Ideal for creating eye-catching branding apparel and flags.

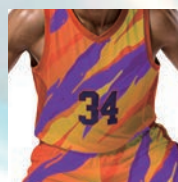
Comparison of TS200-1600 with 4-color and 8-color ink sets



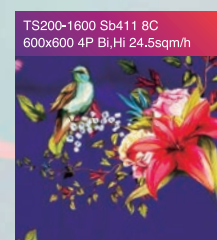
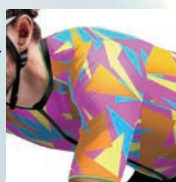
Vi Violet
The glossy texture adds a sense of luxury.



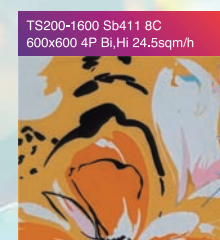
Or Orange
Vivid orange colors produced with high chroma.



FP FY Fluorescent Pink and Yellow
Compared to conventional fluorescent inks, the reflectance has been enhanced, enabling more vivid expression than ever before.



With Violet ink, even bluish purples that typically appear muted in 4-color printing are rendered with brilliant and vivid intensity.



Bright orange color that typically lose their brilliance are reproduced with striking vibrancy, and even delicate light tones are expressed with a smooth and refined finish.



Fluorescent Pink achieves a 10% increase in reflective density, while Fluorescent Yellow achieves a 24% increase.

*Compared to conventional model

Comprehensive features to enhance operational efficiency

High-Quality Print for Everyone with Simple Operation.

Automatic Dot Adjustment DAS1 (Dot Adjustment System 1)

Auto-adjustment of dot position and media feed amount correction by printer.

*Some media cannot be automatically applied.

Before DAS



Improper dot position

After DAS



Proper dot position and feed amount

Ink-saving function

*Rastellink7 feature

Reduces ink consumption while maintaining color balance. Easy to use with no expertise required.

Standard Printing
(Ink Save OFF) - ICC



Level 3
(Approx. 30% Reduction) - ICC



Apps support efficient operations

Operate machines remotely



MRA

(Mimaki Remote Access)

- Keep track of ink types and alerts instantly.
- Operate the machine remotely just like using the built-in panel.

Achieve smooth and planned operations

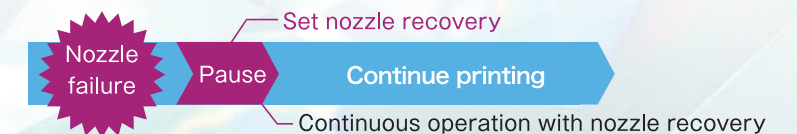
Mimaki Cloud Technology **PICT**

- Monitor printer operation status and ink usage.
- Enables proactive planning for maintenance schedules and ink refills.

Support features keep your work running

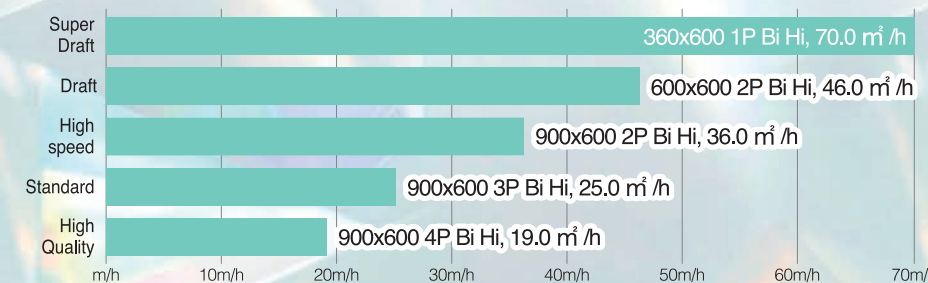
NRS(Nozzle Recovery System)

If clogging is not resolved after cleaning, the NRS selects substitute nozzles to continue the printing operation.



Productivity

TS200-1600 4C



TS200-1600 8C

