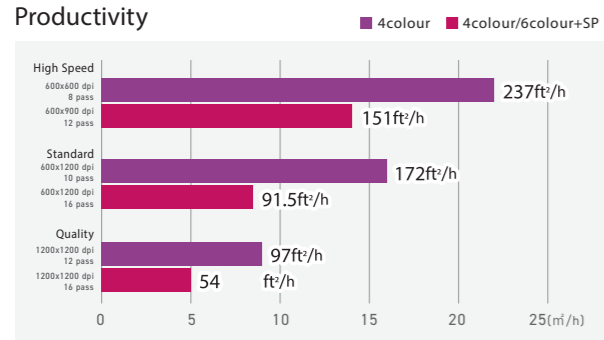


Next-generation UV ink that's even safer for people and the environment

Approximately **30%** less odor than before, making it even easier to use!

SVHC-Free *1 **CMR-Free** *2,3

*1 Substances of Very High Concern (SVHC), which may pose significant risks to human health and the environment
 *2 Substances classified as Carcinogenic, Mutagenic, or Reprotoxic (CMR)
 *3 Indicates that as of March, 2026, it is not classified in the CMR category as an ink under the EU-CLP Regulation



Raster Link 7

Supports beautiful printing and smooth operation

- Improved reproduction of PDF special effects such as transparency
- Faster RIP processing of PDF data for enhanced productivity
- Consistent results with the Variable Print function
- Displays frequently used setting and pop-up windows

Mimaki Cloud Technology **PICT**

PICT automatically collects operating status, ink usage, and error information, enabling accurate remote monitoring of printers and supporting more efficient

- Production Management
- Ink Refill Planning
- Maintenance Scheduling etc...

Operate machines remotely

MRA (Mimaki Remote Access)

List ink type, heater temperature, and notification alerts on a smartphone or Windows-based PC. The machine can be operated remotely with the same feeling as the

Same Network Segment

Smartphone, Windows PC, Wireless LAN Router

Specifications

Item	UJ330H-160
Print Head	On-demand piezo head (2 staggered layout)
Print Resolution	Y: 600, 1,200 dpi X: 600, 900, 1,200, 1,800 dpi
Head Gap	Automatic nozzle-to-media distance adjustment 1.5 mm to 3.0 mm (in 0.1 mm div.), automatically adjusted by belt elevation.
Maximum Print Width	1,610 mm (63.4")
Media (Roll)	Supported Media Width: 210 - 1,620 mm (8.3 - 63.8") Outer dia.: ϕ 250 mm (9.8") or less Roll Weight: 45 kg (99 lb) or less Core dia.: 2 inches, 3 inches Take-Up Torque Limiter: Standard Setting: Low (adjustable from Low to High)
Media (Rigid)	Supported Media Width: 210 - 1,620 mm (8.3 - 63.8") Supported Media Length: 280 - 2,500 mm (11.0 - 98.4"), Print Length: 270 - 2,490 mm (10.6 - 98.0") Control allows up to 3,100 mm (122.0"), Print Length: up to 3,090 mm (121.7")*1 Media Thickness: 50.8 mm (2") or less Media Weight: 25 kg (55.1 lb) or less (7 kg (15.4 lb) / m ² or less)
Interface	Ethernet 1000 BASE-T (recommended) / USB2.0 Hi-speed
Automatic Adjustment	DAS2 Equipped
Power Specifications	Single-phase AC 100 - 120 V \pm 10% / 8 A, Single-phase AC 200 - 240 V \pm 10% / 4 A, 50/60 Hz \pm 1% \times 2
Power Consumption	Up to 800 W \times 2; \leq Inlet1 400 W / Inlet2 500 W during operation; \leq 4.5 W \times 2 in sleep mode
Operational Environment	Temperature: 20 - 30 degC (68 - 86 degF) Humidity: 35 - 65% RH (no condensation) Accuracy Guaranteed Temperature Range: 20 - 25 degC (68 - 77 degF) Dust Level: Equivalent to a typical office environment
Dimensions (W x D x H)	Main unit: 3,225 x 785 x 1,420 mm (126.9 x 30.9 x 55.9") Main unit + 1 Roller table set: 3,225 x 2,664 x 1,420 mm (126.9 x 104.9 x 55.9") Main unit + 2 Roller table set: 3,225 x 4,712 x 1,420 mm (126.9 x 185.5 x 55.9")
Unit Weight	386 kg (851 lb)

*1 Operation beyond the specified supported range is possible, but not guaranteed.

Inks and substrates:
 •For safe and reliable operation, please check media compatibility in advance.
 •As physical properties of ink (adhesion, weather resistance etc.) are different depending on media, please be sure to have a print test in advance.
 •Depending on the application, primers, other surface treatment or surface protection such as lamination may be necessary.

•Some examples shown in this catalog are artificial renderings. •Specifications, designs and dimensions shown in this catalog may be subject to change without notice for technical improvements. •The corporate and merchandise names in this catalog are the trademarks or registered trademarks of the respective corporations. •Inkjet printers use extremely fine dots, so colors may vary slightly after replacement of print heads. •Also note that when using multiple printer units, colors could vary slightly from one unit to another due to slight individual differences. •Please note that descriptions and data in this catalog are as of March 2026.

Mimaki
mimakiusa.com

MIMAKI USA, INC.
4851 Thurmon Tanner Parkway, Ste. 100, Flowery Branch, GA 30542
Tel. 888-530-3988



Ink

Item	Color	Item Code	Remarks
ELS-170 GREENGUARD Gold Certified ink	Cyan	ELS170-C-BA	1 L Bottle
	Magenta	ELS170-M-BA	
	Yellow	ELS170-Y-BA	
	Black	ELS170-K-BA	
	Light Cyan	ELS170-LC-BA	
	Light Magenta	ELS170-LM-BA	
	White	ELS170-W-BA	
ELS-175 GREENGUARD Gold Certified ink	Cyan	ELS175-C-BA	1 L Bottle
	Magenta	ELS175-M-BA	
	Yellow	ELS175-Y-BA	
	Black	ELS175-K-BA	
	Light Cyan	ELS175-LC-BA	
	Light Magenta	ELS175-LM-BA	
	White	ELS175-W-BA	
LUS-210 GREENGUARD Gold Certified ink	Cyan	LUS21-C-BA	1 L Bottle
	Magenta	LUS21-M-BA	
	Yellow	LUS21-Y-BA	
	Black	LUS21-K-BA	
	White	LUS21-W-BA	

Options

Roller Table Assy	Ionizer bar and Bracket Kit
Roller Table Assy	UJ330H-160 Ionizer Kit
OPT-01020	BOM - UJ330H Ionizer Kit
*2 units per set	

Mimaki

Hybrid UV Inkjet Printer

UJ330H-160



Next Generation

Roll and Rigid (Board) - All in One Printer

01

Expand your range of applications

The UJ330H-160 supports roll media that were previously difficult to handle.

Even thin films and fabrics, which were difficult to transport with conventional grit rollers, can now be conveyed stably. This ensures

Roll



Reliable performance for your existing applications



Self-Adhesive Vinyl and Banner

Indoor Signage



Wallpapers

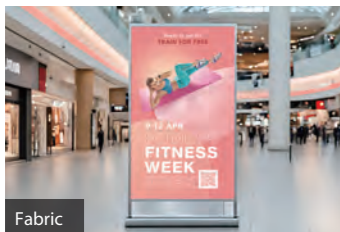
Retail Interior Décor



Self-Adhesive Vinyl

Floor Signage

Unlock new possibilities with challenging materials



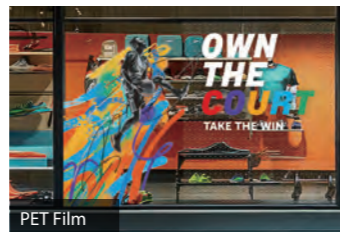
Fabric

Soft Signage



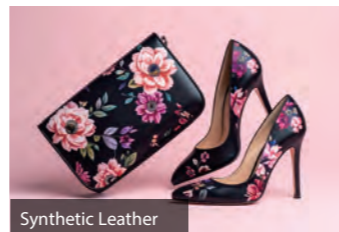
Soft PVC

Space Divider / Tent Signage



PET Film

Window Graphics



Synthetic Leather

Bags, Shoes, and Vehicle Seats

*Material transport performance may vary depending on media type and specifications. Pre-testing is recommended before production.

02

Boost your workflow efficiency

Achieve stable handling of rigid materials.

Direct printing onto a wide range of rigid board materials eliminates

Rigid



Large-format boards and lightweight boards prone to warping



Aluminum Composite Panel

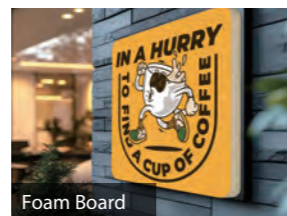
Outdoor Signage



Styrene Board

Display Panels

Thick signage materials



Foam Board

Channel Signage

Simultaneous printing of multiple boards



Reduce media changeover time and improve your overall workflow efficiency.

03

Fast, Beautiful Output with 330 Quality

Equipped with high-density and high-definition 330 Series print heads in a staggered configuration, the UJ330H-160 delivers solid, uniform fills to smooth,

*When using CMYK + White + Clear or CMYK LcLm + White ink sets.

Precise control of ink droplets as small as 4 pl

Each ink droplet is placed exactly where intended, delivering high-quality images

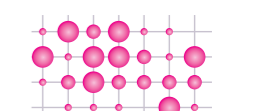
HEAD



Beautiful solid fills with high-density ink

Three precisely controlled droplet sizes are combined to produce smooth, even solid areas. Larger droplets provide coverage, while smaller dots refine details to create rich gradations and outstanding image quality.

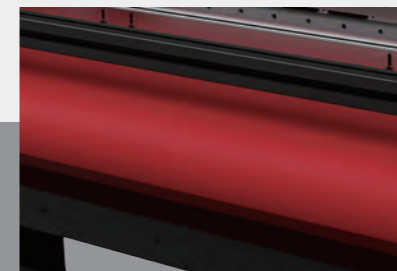
● Large ● Middle ● Small



UV 3-Way Conveyor System

Heat-free UV technology minimizes the risk of media warping and deformation during printing, ensuring stable media transport.

Combined with Mimaki's proprietary 3-Way conveyor system, the UJ330H-160 delivers reliable and stable output across a wide range of both roll and rigid media.



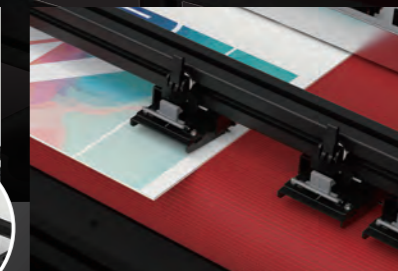
1 Auto Vacuum

A powerful vacuum holds the media evenly across its surface during transport, preventing wrinkles and sagging.



2 Rear Clamp Roller

Suppresses lifting and warping of rigid media, ensuring stable media transport alignment.

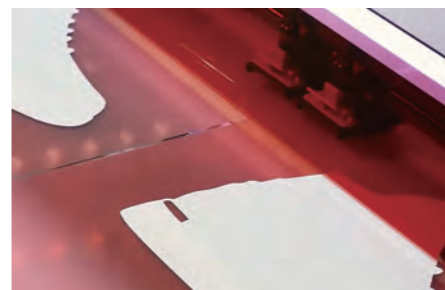


3 Power Lock Roller

Suppresses warping at the front and edges of rigid media, ensuring stable transport even for large-format and warp-prone materials.

UV Printing adds value

High-opacity white ink



Clear Ink for gloss and matte finishes



Multi-layer printing expands creative possibilities (up to 5 layers)



Produce different designs on a single sheet—ideal for double-sided window graphics.